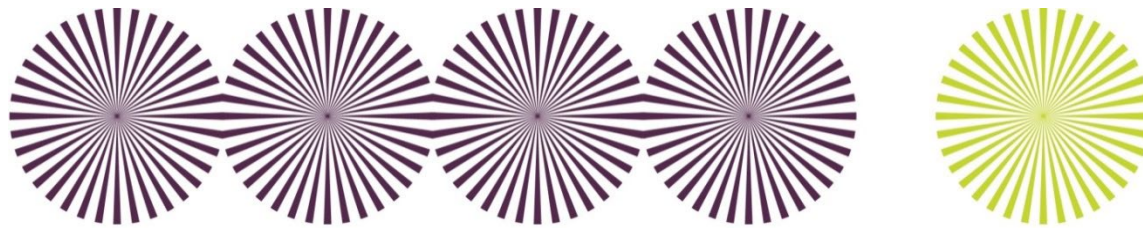


Digital Device Deployment

INA Primary
October 2022



Digital Device Deployment



We are excited to share with you the details of our Digital Device Programme as part of INA's digital strategy.

Each student in an Ark school from Year 3 upwards will have their own laptop, which they can use to support their learning at home.

Therefore, this term we will be issuing every child with a Chromebook laptop.



Chromebook Laptops



The digital devices will come with all of the apps and software that your child needs to support their learning for no additional charge.

The Chromebook laptop will enable more time for learning at home, which might include:

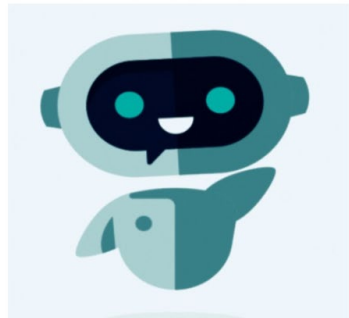
- Completing usual home learning on their device via MS Teams
- Working through online learning materials that the school has shared
- Researching topics for school projects
- Pre-reading articles or watching videos in advance of a new topic
- Completing quizzes to check learning from lessons during the day or week
- Communicating with teachers and accessing lessons in the case of absence from school
- Studying and revising independently

Safety



- The Chromebooks are to be used and remain at home and treated in line with the school's Acceptable Use Policy.
- Teachers will spend time explaining the expectations and teaching safe use of the devices, before they go home.
- The Chromebooks are monitored and can be accessed remotely by the school, to support with technical queries and also ensure pupils use the devices safely.
- There are also time restrictions on the devices.

IT Support - SPArky



Ark

SPArky Launch Pack

- The IT and Systems Team have created SPArky, a chatbot that can answer student Chromebook questions and also raise an IT ticket for students where necessary.
- This Launch Pack provides materials that promote and explain SPArky to students, staff and parents to use as you feel appropriate within your school. We recommend these materials are used as they will help everyone understand and get the best out of SPArky.

<https://static1.squarespace.com/static/6092803535adb90c4a280646/t/63108281a76be6244d07a427/1662026375496/Beginner%27s+Guide+PDF.pdf>

<https://arkschools.sharepoint.com/sites/spark/SitePages/Support.aspx>

User Guide to SPArky

Introducing SPArky!
SPArky is a helpful chatbot that has been created to help you confidently resolve any questions related to your Chromebook.

How will SPArky help me?
SPArky is here to answer questions you have about your Chromebook or the apps you use for homework. SPArky helps you to become an independent problem solver.

What is a chatbot?
A chatbot is a computer programme which is used to help quickly answer questions on line. A team of people help a chatbot to understand what answers to give. A chatbot will improve over time when more questions are asked. It's called a chatbot because Chatter + Robot = Chatbot!

Where can I access SPArky?
You can access SPArky on the IT Support page of SPArk. SPArk is the homepage of your Chromebook.

Example of questions you can ask SPArky:

- How do I access my emails?
- Can I take a screen shot?
- I can't connect to WiFi?

Here's what I found:

[To learn how to access your emails click here](#)

[To zoom in on the document click the zoom icon](#)

[For how to create and reply to an email click here](#)

Just now

What if SPArky can't answer my question?

- Try again, keeping your question short but with important words included
- Take a look at the Explore IT Support page

More help:
Sometimes SPArky will ask you to bring your Chromebook into school so your issue can be fixed. Remember to bring the special ticket number that is emailed to you.

Supply page 1 of 1

October 2022 – Collecting Devices



We have asked you to come in so you can collect your child's Chromebook and sign the Digital Home School Agreement.



Digital Home School Agreement

**Isaac Newton Academy
Primary**



Digital Home School Agreement to be handed out to parents.

Questions



If you have any questions about the learning or device use, please contact your child's class teacher in the first instance, through the Year Group email address.

| | |
|--------|--|
| Year 3 | year3info@isaacnewtonacademy.org |
| Year 4 | year4info@isaacnewtonacademy.org |
| Year 5 | year5info@isaacnewtonacademy.org |
| Year 6 | year6info@isaacnewtonacademy.org |

Any other questions, please call 0208 911 6666, email primary@isaacnewtonacademy.org or speak with a member of the Senior Leadership Team in the playground.