

Can you show me how to take a screenshot?

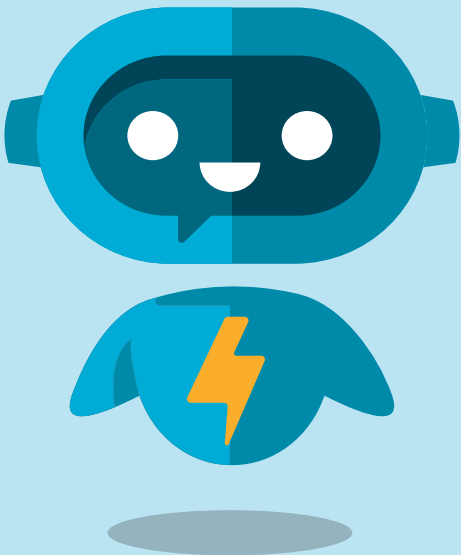
SPArky, do you like pizza?

I've forgotten my password

I can't connect to WiFi

I can't log in

...



SPArky

SPArky is the new chatbot that can help you with questions about, or problems with, your child's Chromebook.

SPArky is there to provide IT support to you and your child at home

Your child can get help from SPArky on their Chromebook by visiting the IT Support Page on www.ark-spark.co.uk

You can still get help from SPArky on another device but your child will need to log in to their school Microsoft account

SPArky can help with many common issues but sometimes will direct you to our IT experts. Please help your child to follow these instructions.

Coming soon!